

## Quick Installation Guide

AC1200 Wireless Dual Band Gigabit Router

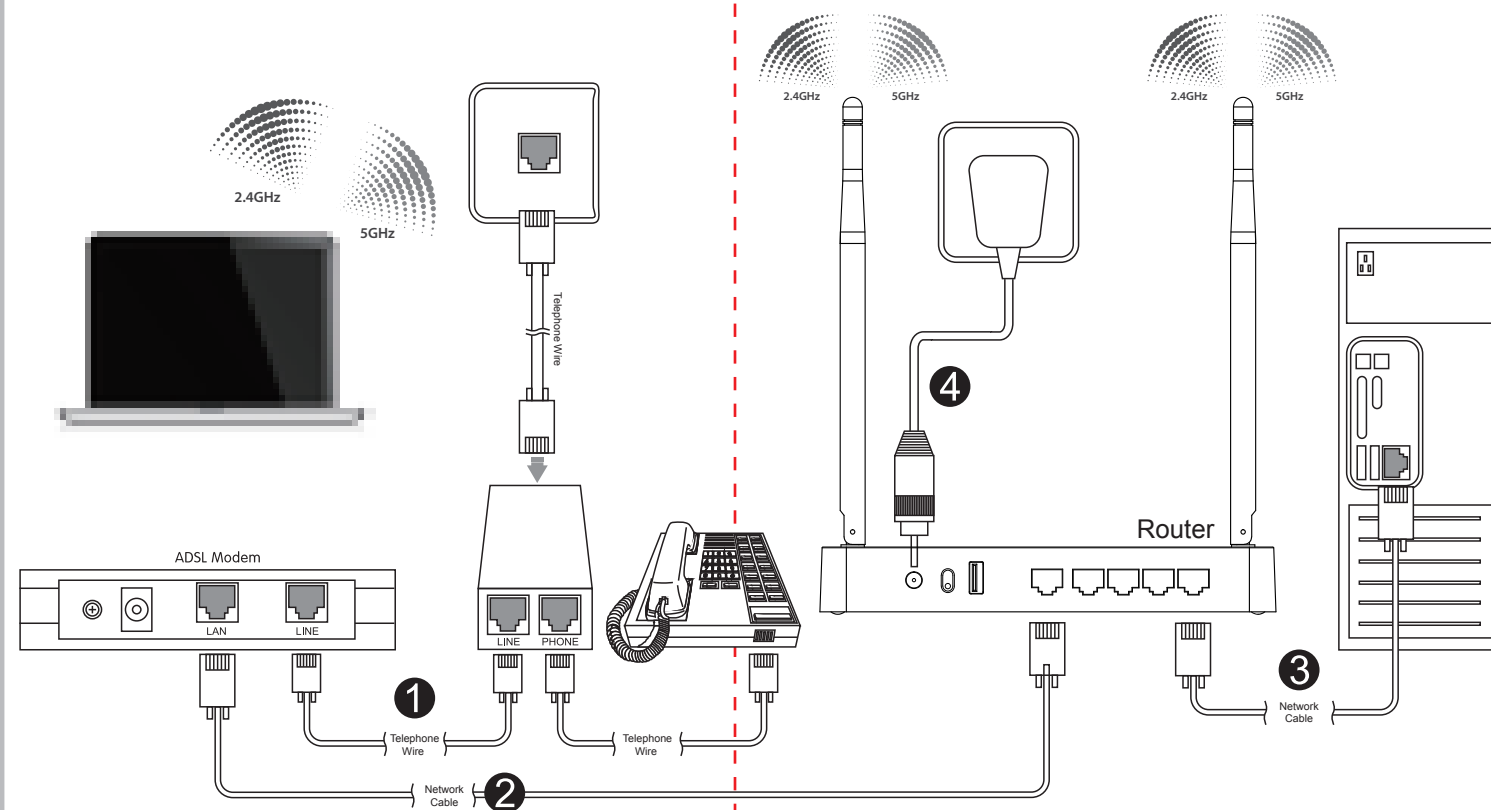
Model No.: A2004NS

V2.1601

Copyrights © by TOTOLINK All rights reserved. Website: <http://www.totolink.net>  
Information in this document is subject to change without prior notice.

# 1 Hardware Installation

If you access Internet by ADSL, please comply with step 1, 2, 3 and 4 in below diagram in correct order; if you access Internet by residential broadband, please comply with step 2, 3 and 4 to connect the WAN port of your router with the residential broadband directly.



After connected, please check whether the LED indicators are normal.

Name	Description
Power	This indicator lights blue while the router receiving power, otherwise it is off.
CPU	This indicator keeps blinking blue after the router powered on.
2.4G	This indicator lights blue when the router's 2.4G wireless enabled.
5G	This indicator lights blue when the router's 2.4G wireless enabled.
WAN	When the WAN port is connected successfully the indicator lights blue.
1/2/3/4 LAN	While transmitting or receiving data through the WAN port the indicator blinks blue.
LAN	While transmitting or receiving data through the LAN port the indicator blinks blue.
USB	This indicator lights blue when you have plugged a USB device on the router.

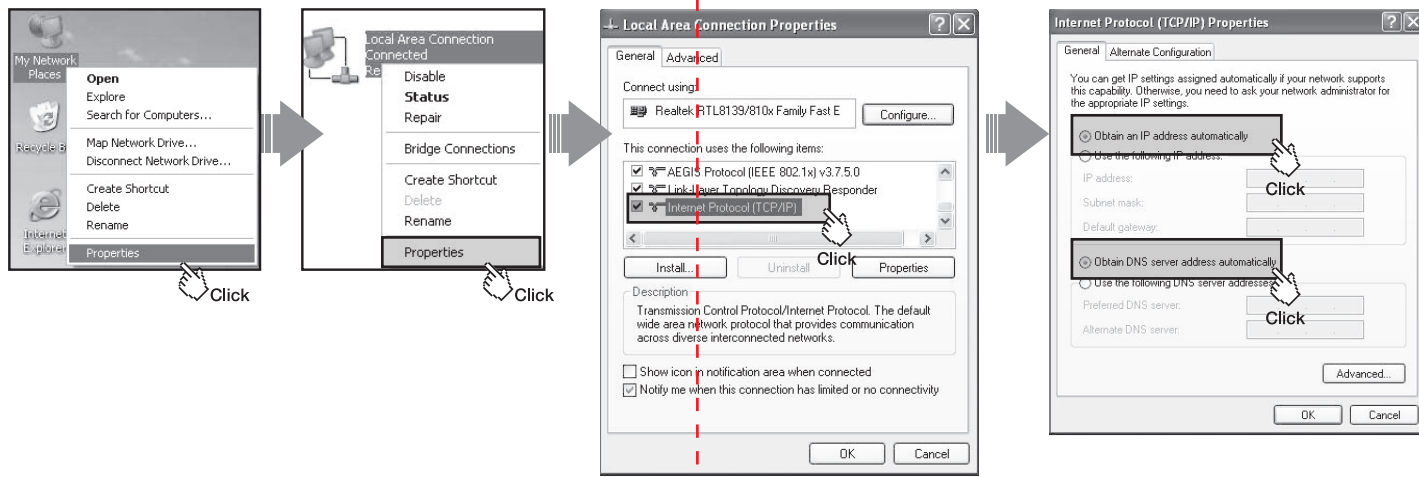
### NOTE:

1. Please disconnect the power adapter and all cables during thunderstorm weather;
2. Keep away from heat source and keep well ventilated;
3. Please pay attention to the waterproofing and moisture-proof when storing, transporting and running;
4. The power supply must reach the rated current and power;
5. Put the router in flat places.

# 2 Set Up PC

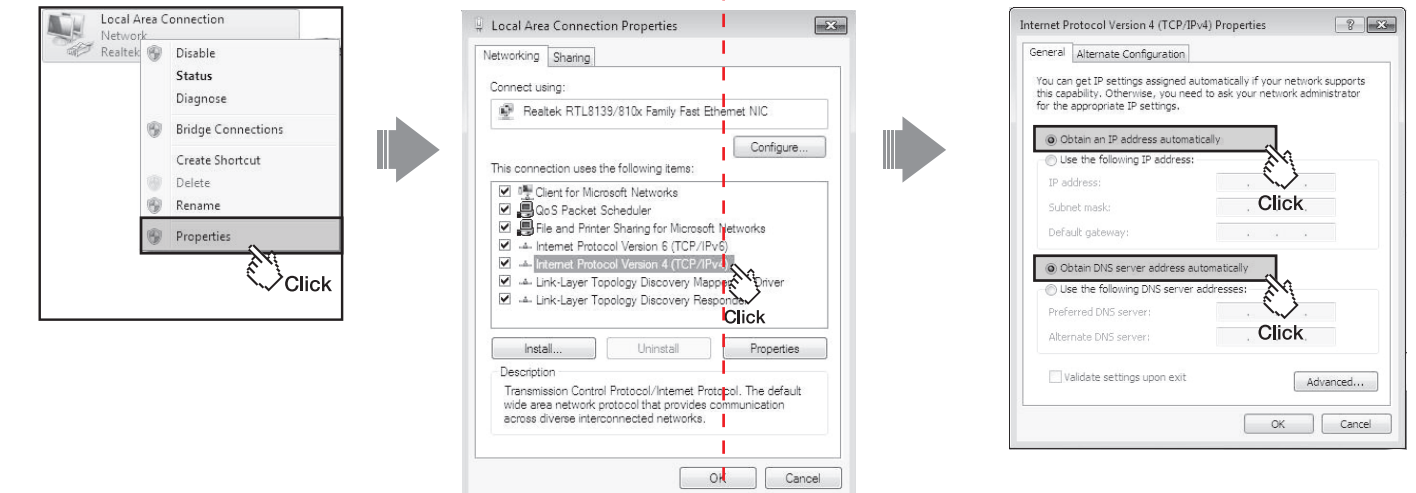
**Windows 2000/XP** For Windows 2000 or Windows XP Operating System, please comply with following steps to set up.

1. Right-click "My Network Places", click "Properties"
2. Right-click "Local Area Connection", click "Properties"
3. Double-click "Internet Protocol (TCP/IP)"
4. Choose "Obtain an IP address automatically" and "Obtain DNS server address automatically", click "OK", go back to previous interface and click "OK"



**Windows Vista/7** For Windows Vista or Windows 7 Operating System, please comply with following steps to set up.

1. Click "Start—Control Panel—Network and Internet—Network Connection", right-click "Local Area Connection", and choose "Properties".
2. Double-click "Internet Protocol Version 4 (TCP/IPv4)"
3. Choose "Obtain an IP address automatically" and "Obtain DNS server address automatically", click "OK", go back to previous interface and click "OK"



# 3 Set Up Router

Please set up the router following below steps.

1. Run the Web browser.
  - Click
2. Type 192.168.1.1 in the Web Browser address bar, then press Enter key.
  - Address:
3. It will show up the following page, please click Internet Wizard icon.
  - 
  - Click
4. Enter valid User Name and Password (The default User name and Password are "admin"). Then click "OK" button or press Enter.
  - User name:
  - Password:
  - Remember my password
  - Click
5. Two configuration methods are offered in this part, "Manual Internet Configuration" is recommended to choose.
  - Automatic Internet Configuration (Wizard will search Internet connection type automatically. DHCP or PPPoE modem can be detected.)
  - Manual Internet Configuration (User should configure Internet configuration.)
6. Choose Internet connection types provided by your ISP.
  - Choose one of Internet connection types?
  - DHCP method (Cable Modem, ADSL, and direct LAN service use this method typically. IP address is assigned by DHCP server.)
  - PPPoE method (ADSL service uses this method. PPPoE protocol with user ID and Password from ISP are needed for this method.)
  - Static IP (IP configurations are assigned from ISP. You need the IP address, Subnet mask, gateway and DNS from ISP.)
  - Click
7. The DHCP method is selected by default. Here we take it as an example. You can choose one method to set MAC address according to need. Then click "Next".
  - Recommended to set the MAC address of PC which was connected to Internet before.
  - Add MAC address manually
  - Get by MAC address of PC connected to modem before using router
  - No MAC filter
  - Click
8. Click Save and Close button to reply configuration.
  - Click
9. After Internet wizard, please click the wireless wizard icon to start wireless settings. Click "Next" to process this wizard.
  - Click
10. Choose your country region and click "Next".
  - Select Country:
  - Click

# 4 Wireless Network Connection

1. Right-click "My Network Places", click "Properties".
  - Click
  - Click
2. Right-click "Wireless Network Connection", and click "View Available Wireless Networks".
  - Click
  - Click
3. Confirm the wireless network SSID name, choose one that you would like to connect, then click "Connect".
  - Click
4. Input the encryption key and click "Connect".
  - Click
5. Have connected wireless network, you can access Internet through wireless mode.
  - Click
11. Click "check SSID" and click "Next" if the SSID is available.
  - Click
  - Click
12. Choose the best channel, and click "Next".
  - Click
  - Click
13. Click "Next" if the setting is no problem.
  - Click
14. Setup the encryption for the security of your network.
  - Click
15. Select TKIP or AES cryptography, and then click "Next".
  - Click
16. Input the password (more than 8 characters).
  - Click
17. After confirming the settings, click "Apply and Set 5GHz Wireless Network" button to apply all configuration values.
  - Click
18. 5GHz wireless network wizard is similar with the settings of 2.4GHz, please refer to the introduction of 2.4GHz wireless settings.
  - Click

A2004NS provides a USB2.0 Port, data sharing can be easier and faster via FTP service and Samba service. After plugged a USB device on the router, please click Setup Tool icon to enter the setup interface. Then click Advanced Setup->USB Storage on the sidebar to view the status and configure USB function.